

# ADVANCED Schizophrenia Masterclass for GPs

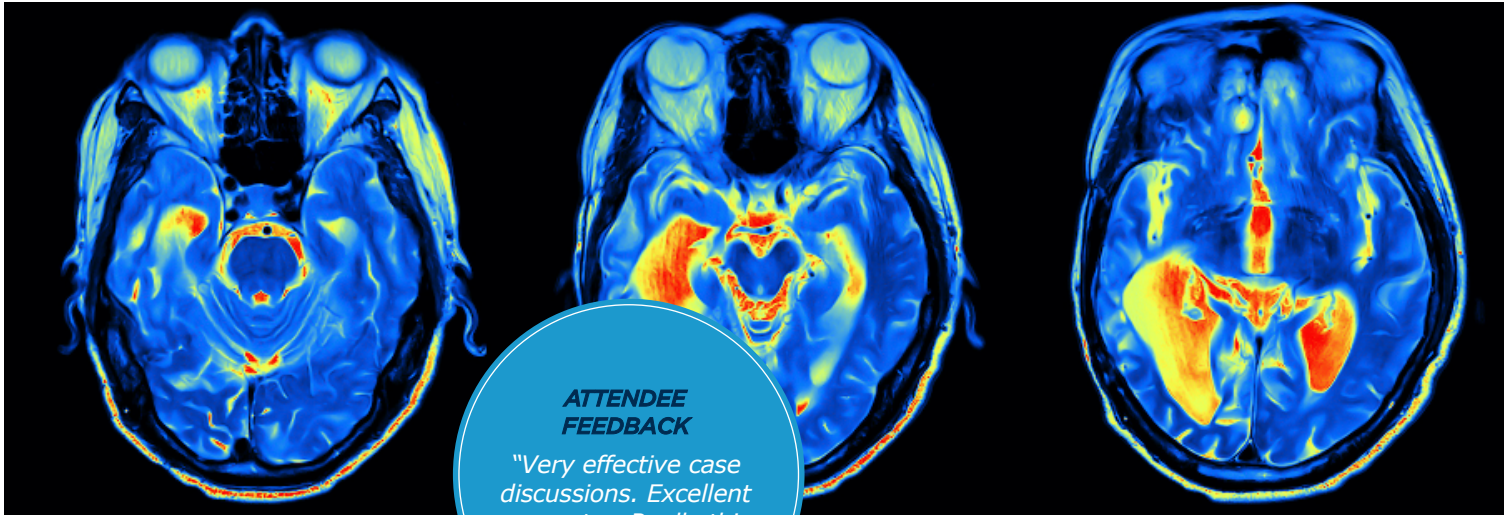
Series of 3 Webinars

TUE 22 JUNE, WED 23 JUNE AND THU 24 JUNE 2021  
AT 6.30PM-8.30PM AEST / 4.30PM-6.30PM AWST

INVITATION

Register here

[https://www.bigmarker.com/series/Advanced-Schizophrenia-June2021/series\\_details](https://www.bigmarker.com/series/Advanced-Schizophrenia-June2021/series_details)



**ATTENDEE FEEDBACK**

*"Very effective case discussions. Excellent presenter. Really this is the Masterclass!"*

## Earn 12 MH CPD points in 3 Evening Webinars

Offered as 3 interactive webinars over 3 consecutive evenings, this webinar series digs deeper into the diagnosis and management of schizophrenia. The training is delivered in an interactive manner using quiz and case studies to consolidate learning.

- Interview skills for assessment of schizophrenia
- Psychopharmacology of antipsychotics
- Role of depot antipsychotics
- Management of side effects
- Evidence based management of schizophrenia
- Treatment resistant schizophrenia
- Metabolic syndrome and EPSE management
- Managing patients on clozapine
- Evidence based management of schizophrenia

## Masterclass Program

**TUE 22 JUNE AT 6.30PM AEST (4.30PM AWST)**

**18.30 Webinar starts**

- » Quiz on assessment of psychosis/schizophrenia
- » Quiz on key questions in diagnosis of psychosis/schizophrenia
- » Quiz on principles of shared decision making
- » Formulation and management principles in psychosis
- » Case studies: First Episode Psychosis / Diagnosis of Schizophrenia

**20.30 Webinar closes after Q&A**

**WED 23 JUNE AT 6.30PM AEST (4.30PM AWST)**

**18.30 Webinar starts**

- » Quiz on management of schizophrenia
- » Quiz on psychopharmacology
- » Quiz on role of partial agonists and depot medications
- » Quiz on physical and cognitive examination in schizophrenia
- » Case studies: Treatment of Schizophrenia / Management of Non-compliance / Management of Treatment Resistance

**20.30 Webinar closes after Q&A**

**THU 24 JUNE AT 6.30PM AEST (4.30PM AWST)**

**18.30 Webinar starts**

- » Quiz on management of side effects
- » Quiz on assessment and management of metabolic side effects
- » Quiz on managing EPSEs
- » Quiz and discussion on Clozapine
- » Quiz on switching strategies
- » Case studies: Management of EPSEs / Metabolic Syndrome / Switching Strategies

**20.30 Webinar closes after Q&A**



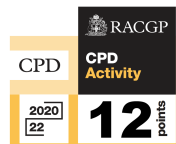
### Masterclass Presenter

**Dr Sanil Rege** MBBS, MRCPsych, FRANZCP

With extensive teaching experience through his various psychiatry course initiatives, Sanil is renowned as an enthusiastic and motivational training facilitator who promotes interaction and discussion. As the founder and Academic Lead of Psych Scene, he aspires to make a difference in mental health by empowering Healthcare Professionals to advance their skills and career through specialised training. Sanil is also founder of Vita Healthcare, a private clinic in Mount Eliza specialising in mental health.

**This course is for Australian General Practitioners only.**

**Register online:** [https://www.bigmarker.com/series/Advanced-Schizophrenia-June2021/series\\_details](https://www.bigmarker.com/series/Advanced-Schizophrenia-June2021/series_details)



**COMPLETION OF ALL 3 SESSIONS IS REQUIRED TO EARN 12 CPD POINTS.**



This Psych Scene meeting is sponsored by Lundbeck Australia and Otsuka Australia with the educational content and speakers independently determined and selected by Psych Scene.