

https://www.bigmarker.com/series/Advanced-Depression-June2021/series_details

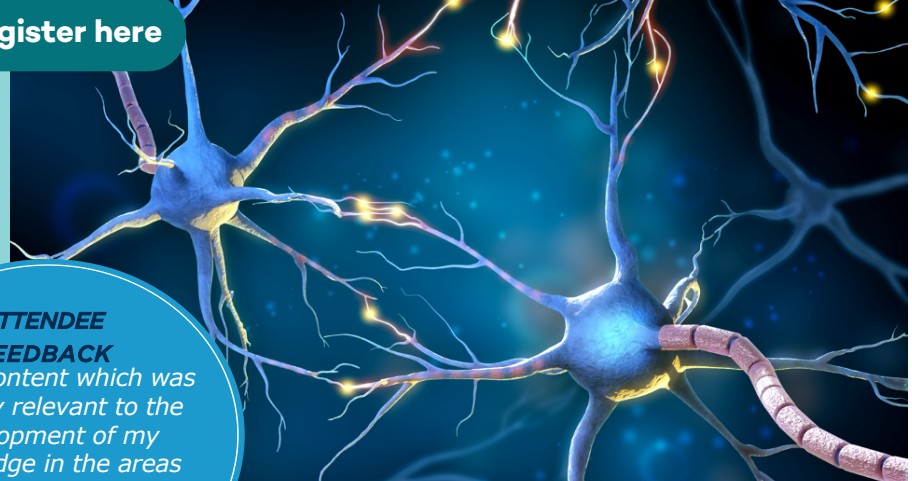
Focus on Co-Morbidities:

Complex Trauma | PTSD | Anxiety Disorders | Personality Disorders

This webinar series delves into more detail in the management of mood disorders, improving the General Practitioner's diagnostic and management skills.

Register here

ATTENDEE FEEDBACK
"Great content which was not only relevant to the development of my knowledge in the areas covered, but also surpassed my expectations in certain aspects."



Earn 12 MH CPD points in 3 Evening Webinars

Delivered in 3 interactive webinars over 3 consecutive evenings, the program is interactive with quizzes and case studies used to enhance learning.

- Diagnosis of and interview skills in depression (including melancholic and psychotic depression)
- Diagnostic Interview skills in Anxiety Disorders
- Red flags for mixed states
- Depression and co-morbidities (Anxiety, OCD, Complex PTSD and Personality Disorder)
- Psychopharmacology of antidepressants
- Psychological therapies for depression (Anxiety, OCD and Complex PTSD)
- Principles of management of treatment resistant depression and complex cases
- Evidence based management strategies in depression
- Management of bipolar disorder and mixed features

Masterclass Program

TUE 8 JUNE AT 6.30PM AEST (4.30PM AWST)

18.30 Webinar starts

- » Quiz on types of depression, interview questions
- » Quiz on assessment of anxiety disorders
- » Quiz on trauma in depression (Complex PTSD / Personality Disorder)
- » Co-morbidities in depression (Anxiety, OCD)
- » Developing formulation and management plan principles
- » Case studies: Major depression with co-morbid anxiety / Major depression with OCD

20.30 Webinar closes after Q&A

WED 9 JUNE AT 6.30PM AEST (4.30PM AWST)

18.30 Webinar starts

- » Quiz on treatment of depression and anxiety
- » Quiz on psychopharmacology of benefits and side effects
- » Quiz on newer antidepressants
- » Quiz on psychological treatments (Principles of Management of BPD)
- » Case studies: Patient with depression (focus on cognition, sexual side effects and weight gain) / Pharmacological and Psychological Management of Anxiety Disorders

20.30 Webinar closes after Q&A

THU 10 JUNE AT 6.30PM AEST (4.30PM AWST)

18.30 Webinar starts

- » Quiz on major depressive disorder with mixed features
- » Quiz on differentiating between bipolar depression and unipolar depression
- » Quiz on management of psychotic depression
- » Quiz on augmentation strategies in treatment resistant depression
- » Case studies: Treatment resistant depression / Perinatal depression / Complex PTSD

20.30 Webinar closes after Q&A



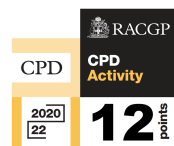
Masterclass Presenter

Dr Sanil Rege MBBS, MRCPsych, FRANZCP

With extensive teaching experience through his various psychiatry course initiatives, Sanil is renowned as an enthusiastic and motivational training facilitator who promotes interaction and discussion. As the founder and Academic Lead of Psych Scene, he aspires to make a difference in mental health by empowering Healthcare Professionals to advance their skills and career through specialised training. Sanil is also founder of Vita Healthcare, a private clinic in Mount Eliza specialising in mental health.

This course is for Australian General Practitioners only.

Register online: https://www.bigmarker.com/series/Advanced-Depression-June2021/series_details



COMPLETION OF ALL 3 SESSIONS IS REQUIRED TO EARN 12 CPD POINTS.



This Psych Scene meeting is sponsored by Lundbeck Australia with the educational content and speakers independently determined and selected by Psych Scene.